



**VANTAGE
GLARE EFFECT®
FILTERS**

THE NEW TOOL
TO CREATE
VISUAL POETRY
WITH PRECISION
ENGINEERING

The **Vantage Glare Effect Filters** are a series of five superior quality lens attachments that use prisms, crystals and other objects to break up light from outside the frame in fascinating and surprising ways.

**VANTAGE
GLARE**  **EFFECT®**



VANTAGE
Glare Effect®
is available in two
sizes (6.6x6.6" or 4x5.65")
They are designed for use with
Arri LMB-4, MB-14 and MB-
28 matte boxes. A set contains
five filters: A, B, C, D, E.

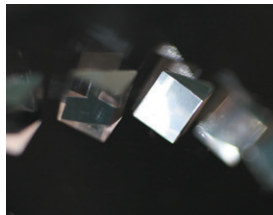
VANTAGE GLARE EFFECT® FILTERS

With the Vantage Glare Effect Filters, Vantage provides another tool whereby filmmakers can make the leap from precision engineering to visual poetry. The Vantage Glare Effect Filters grew out of our work with the Vantage Bethke Filters, which use a variety of materials to create image abstractions through the reflection and refraction of light. The Glare Effect Filters differ, however, from the Bethke Filters in three important ways. The first is the materials with which they are constructed, which include tiny prisms, glass rods, and Swarovski™ crystals, made by the legendary Austrian crystal manufacturer. The second crucial

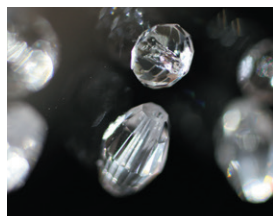
difference is that the Glare Effect Filters are designed to redirect light from outside the frame. As a result, the effect is not generated by a light source within the frame. The Bethke Filters, on the other hand, usually work with a light source that is present in the frame. The third difference is that unlike the Bethke Filters, which come in a range of colors, the Glare Effect Filters are completely white and work without adding color to the light and images they affect.

Because of the additional thickness of the objects they introduce into the optical path, the Vantage Glare Effect Filters take the place of two filters trays. The reflective and refractive elements are mounted between two pieces of optically flawless glass. The filters can be rotated or repositioned within the filter tray during the shot, if so desired, to create dynamic effects.

The effects generated by the combination of Glare Effect Filters and the quality, angle, color and intensity of light range from subtle to powerfully abstract. As with any tool Vantage makes, the final effect depends on the individual judgment and inclination of the artist who wields it. At Vantage, we understand that superlative imagery is often the result of painstaking study and planning that intersects with an unexpected moment of inspiration. Our goal with the Glare Effect Filters is to help facilitate these "happy accidents."



*Mini Prisms used in Vantage
Glare-Effect® A*



*High Quality Glass Crystals
with Diamond Cut are used in
Vantage Glare-Effect® B*